



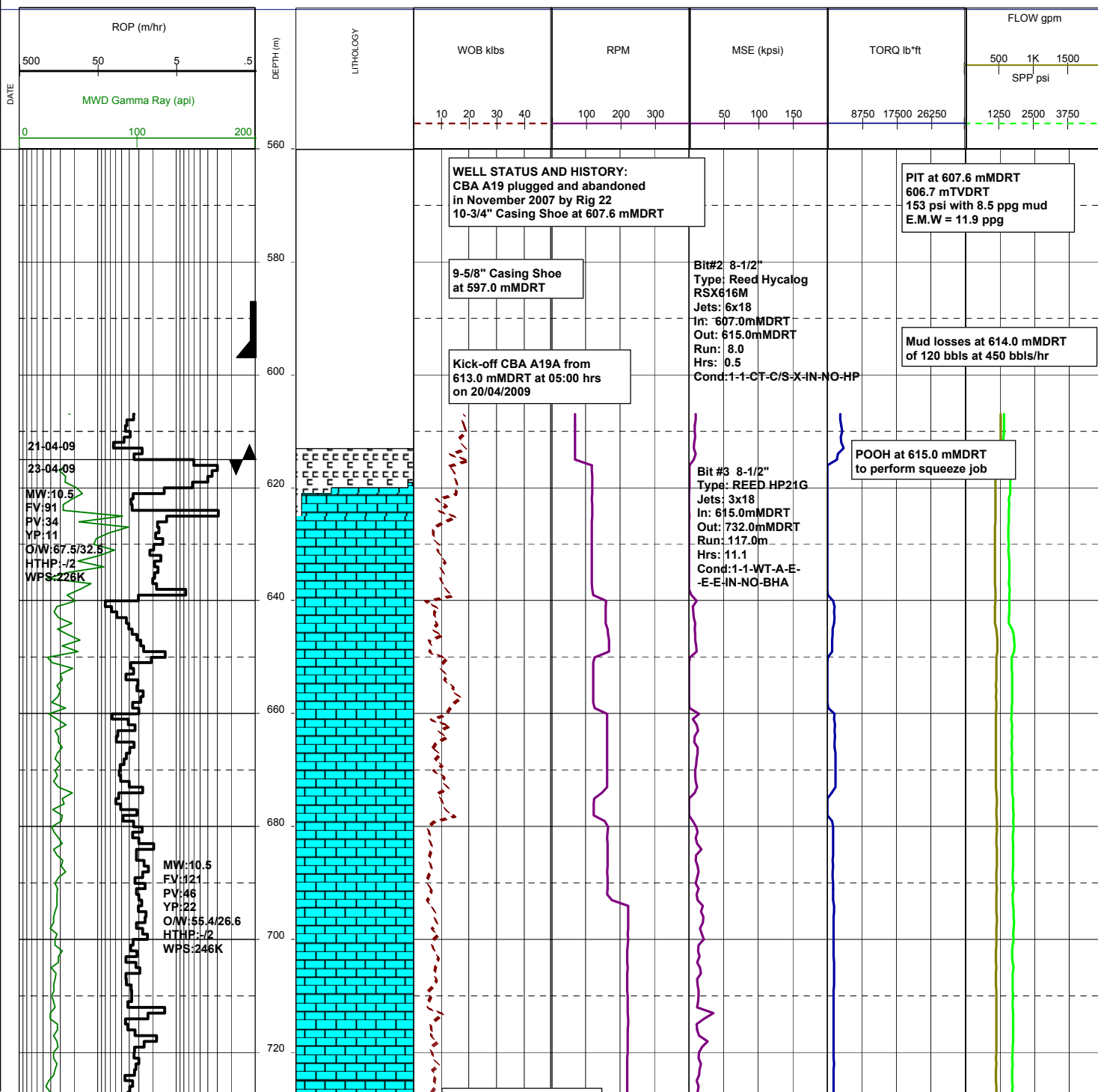
DRILLING LOG



FROM : (m) 560 TO : (m) 3230 SCALE : 1/ 1000

Well Name : Cobia A19A Country : AUSTRALIA
 Company : ESSO AUSTRALIA LTD Final TD: 3200.0 mMDRT
 RT-MSL (m) : 41.0 Final TVD: 2473.45 mTVDRT
 RT-SEABED (m): 120.0

Generated by geoNEXT Package



24/04/09

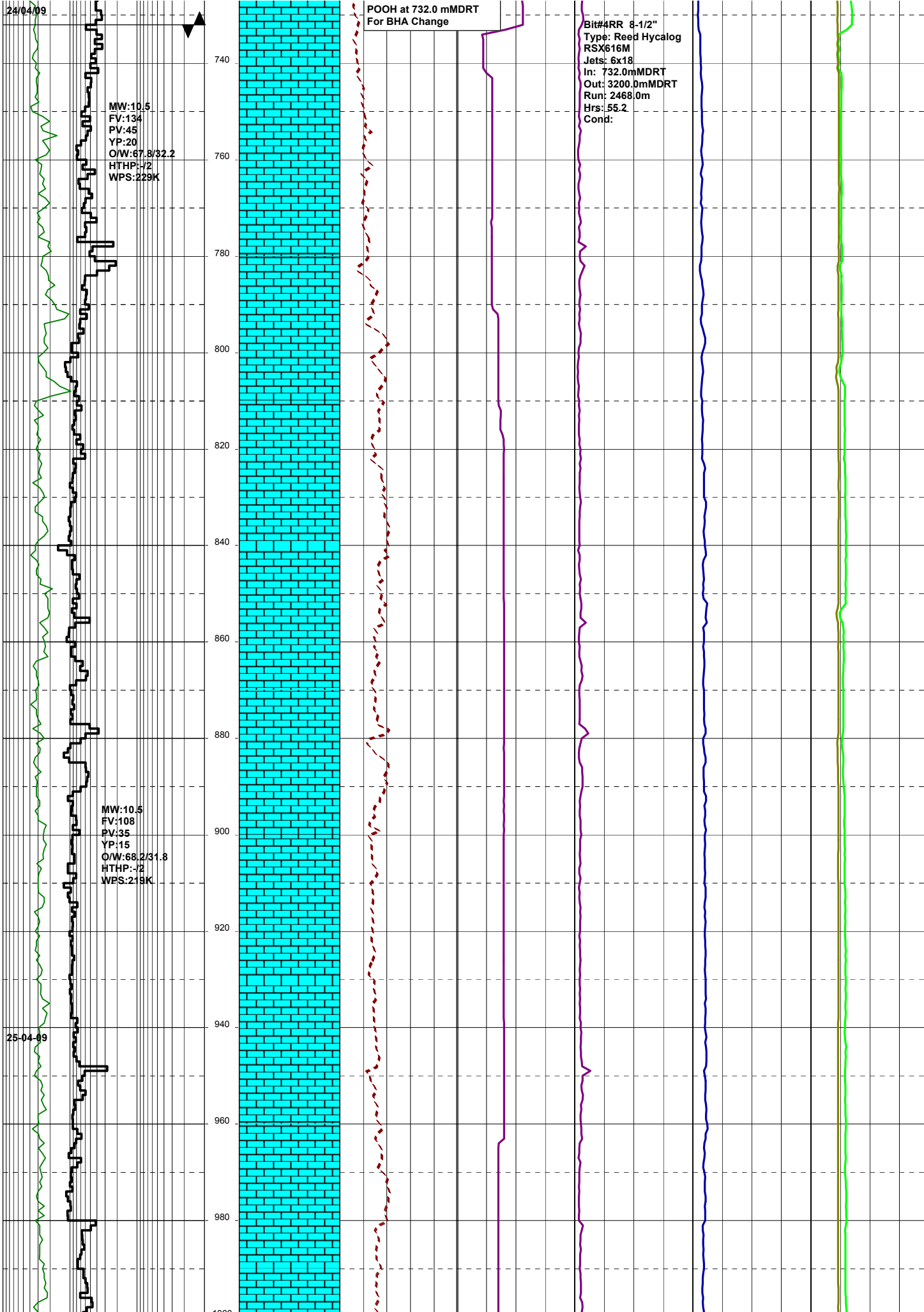
25-04-09

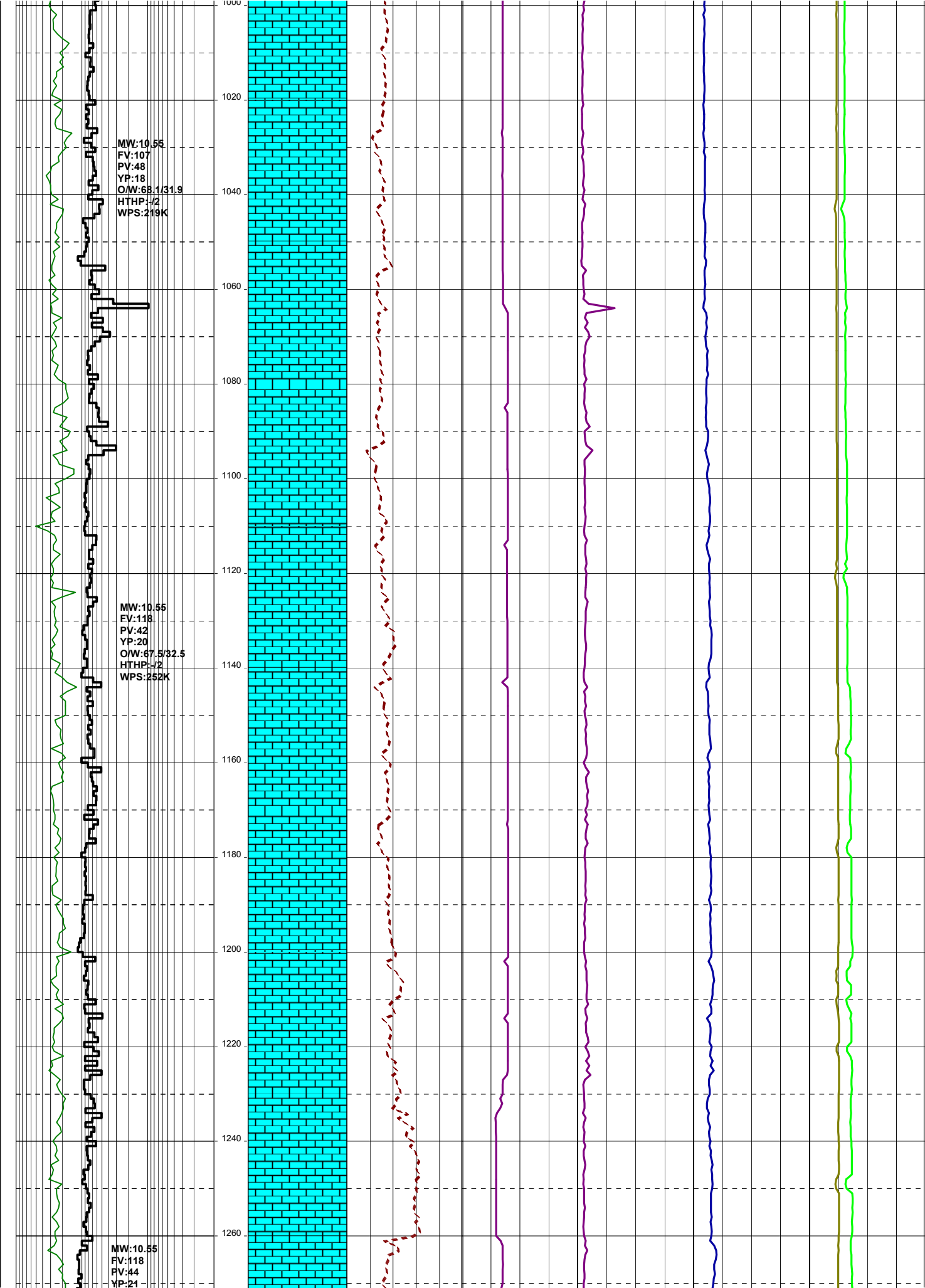
MW:10.5
 FV:134
 PV:45
 YP:20
 O/W:67.8/32.2
 HTHP:-72
 WPS:229K

MW:10.5
 FV:108
 PV:35
 YP:15
 O/W:68.2/31.8
 HTHP:-72
 WPS:219K

POOH at 732.0 mMDRT
 For BHA Change

Bit#4RR 8-1/2"
 Type: Reed Hycalog
 RSX616M
 Jets: 6x18
 In: 732.0mMDRT
 Out: 3200.0mMDRT
 Run: 2468.0m
 Hrs:55.2
 Cond:

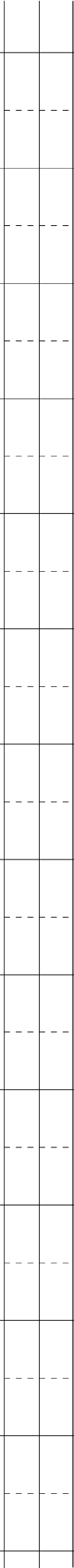
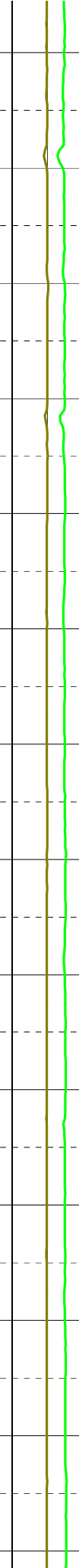
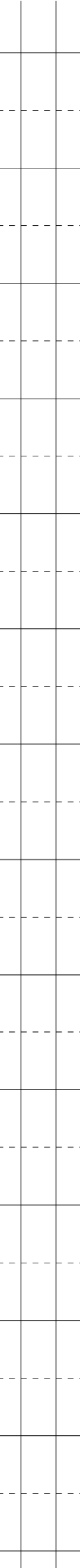
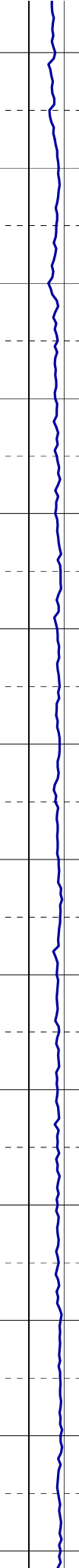
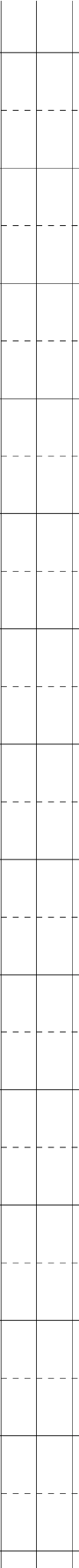
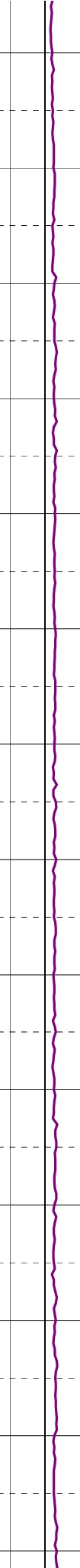
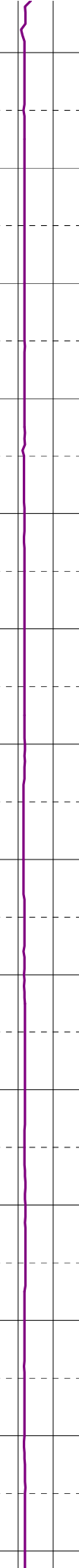
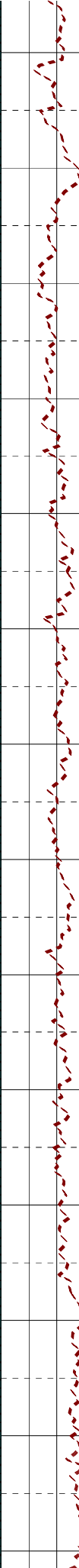
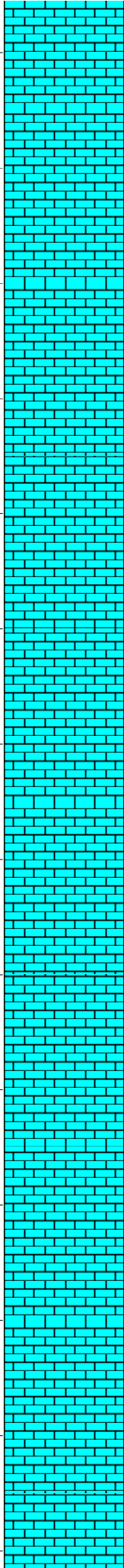


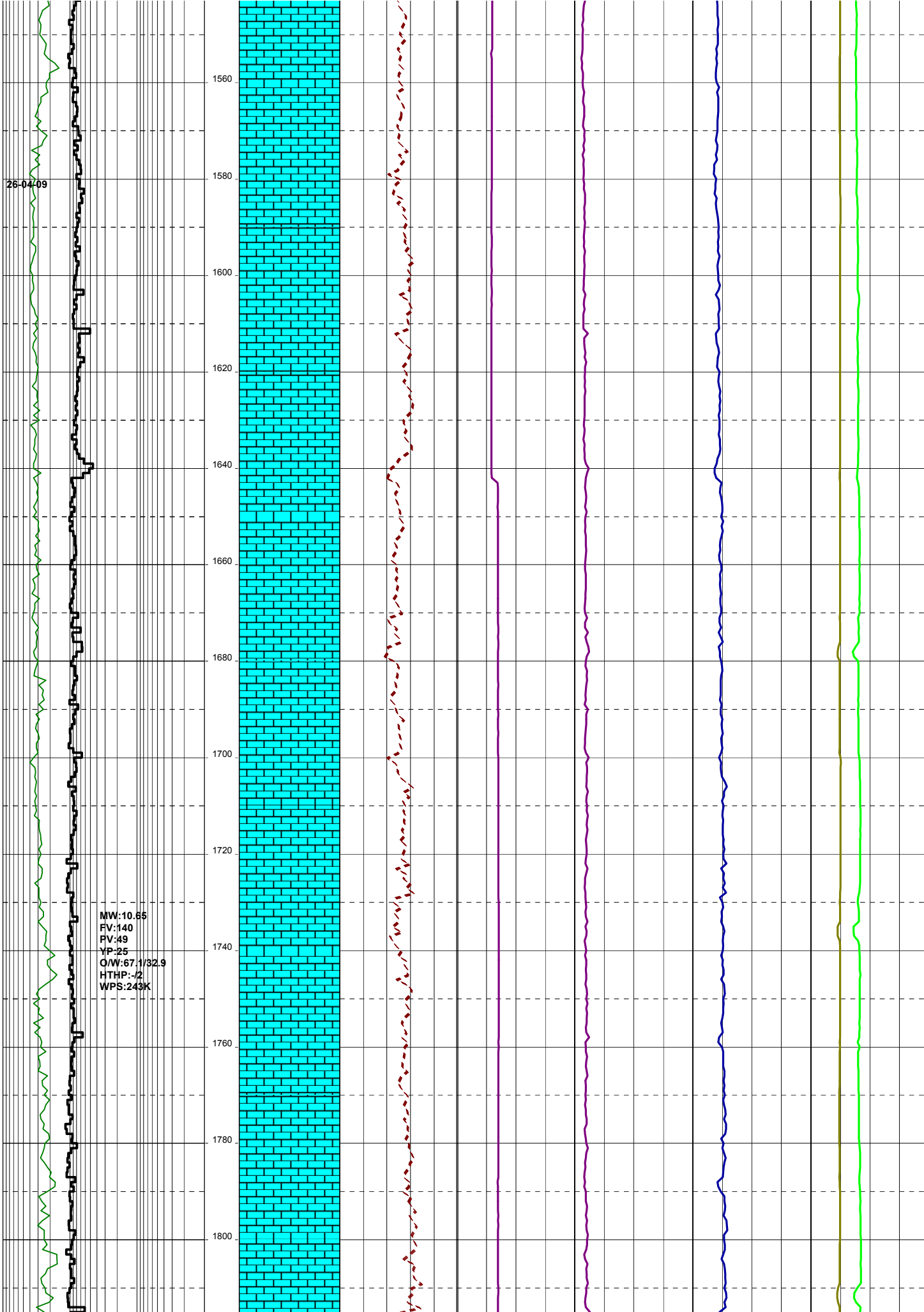


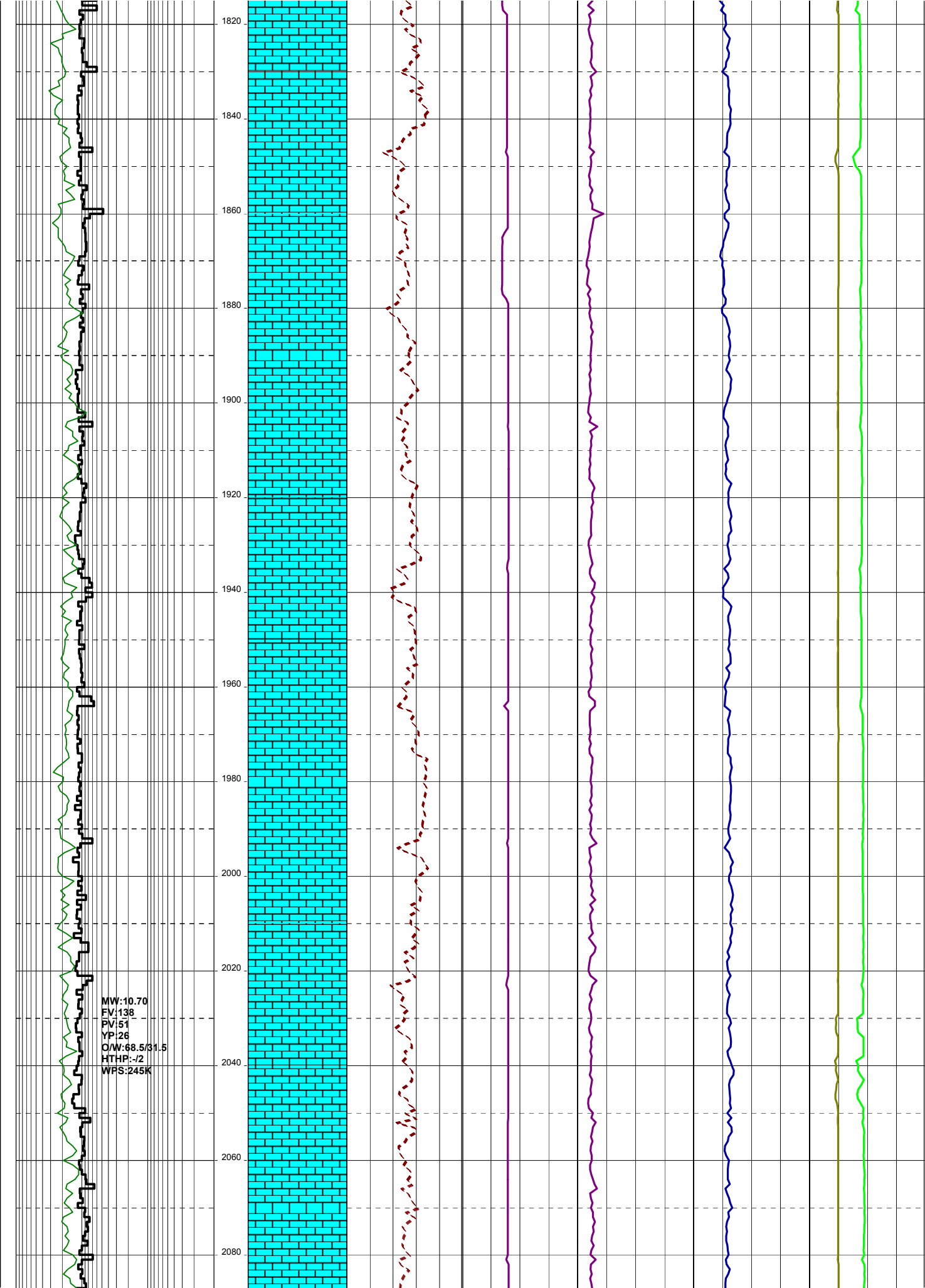
O/W:67.1/32.9
HTHP:-.2
WPS:252K

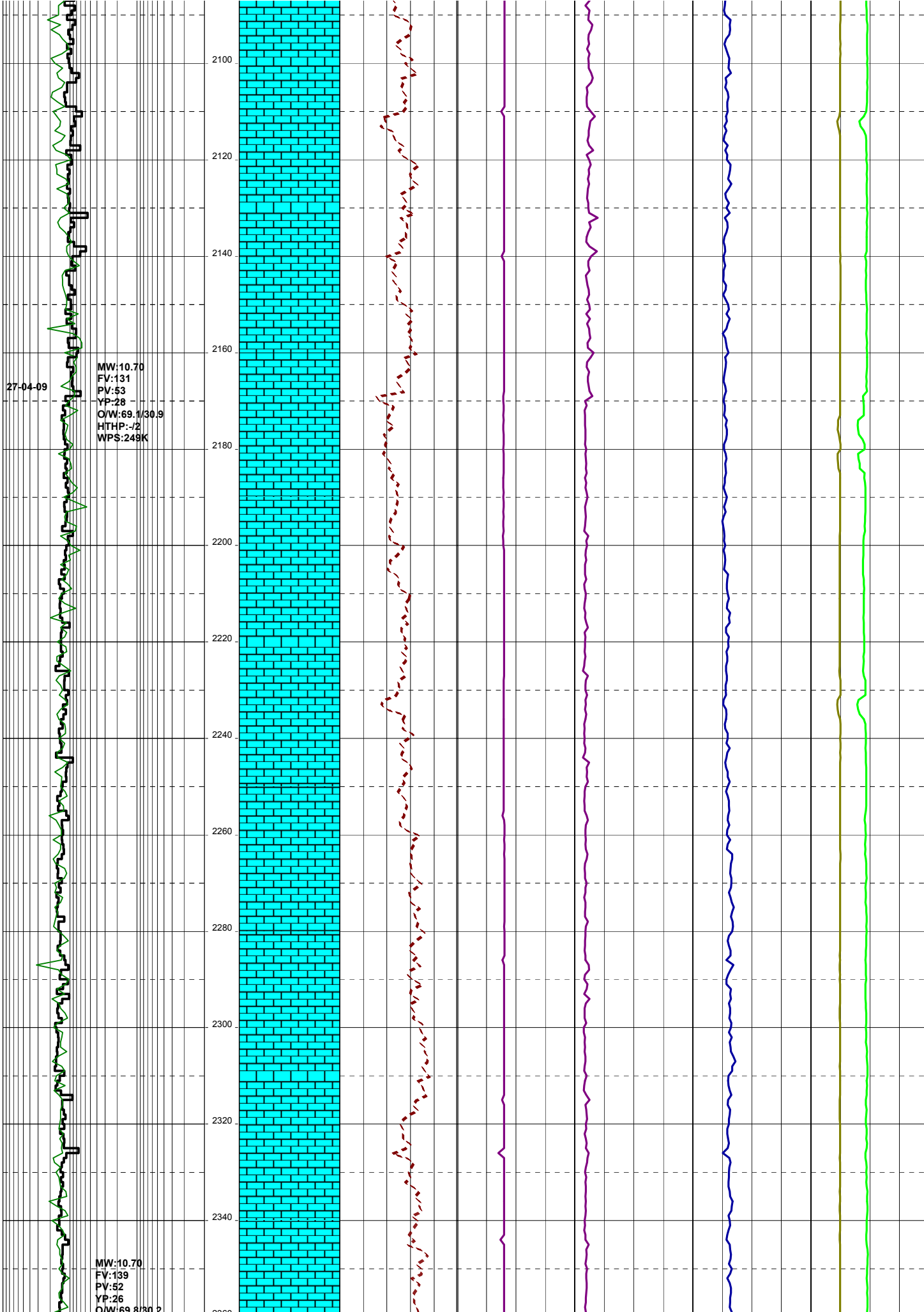
MW:10.60
FV:107
PV:49
YP:24
O/W:67.6/32.4
HTHP:-.2
WPS:238K

1280
1300
1320
1340
1360
1380
1400
1420
1440
1460
1480
1500
1520
1540





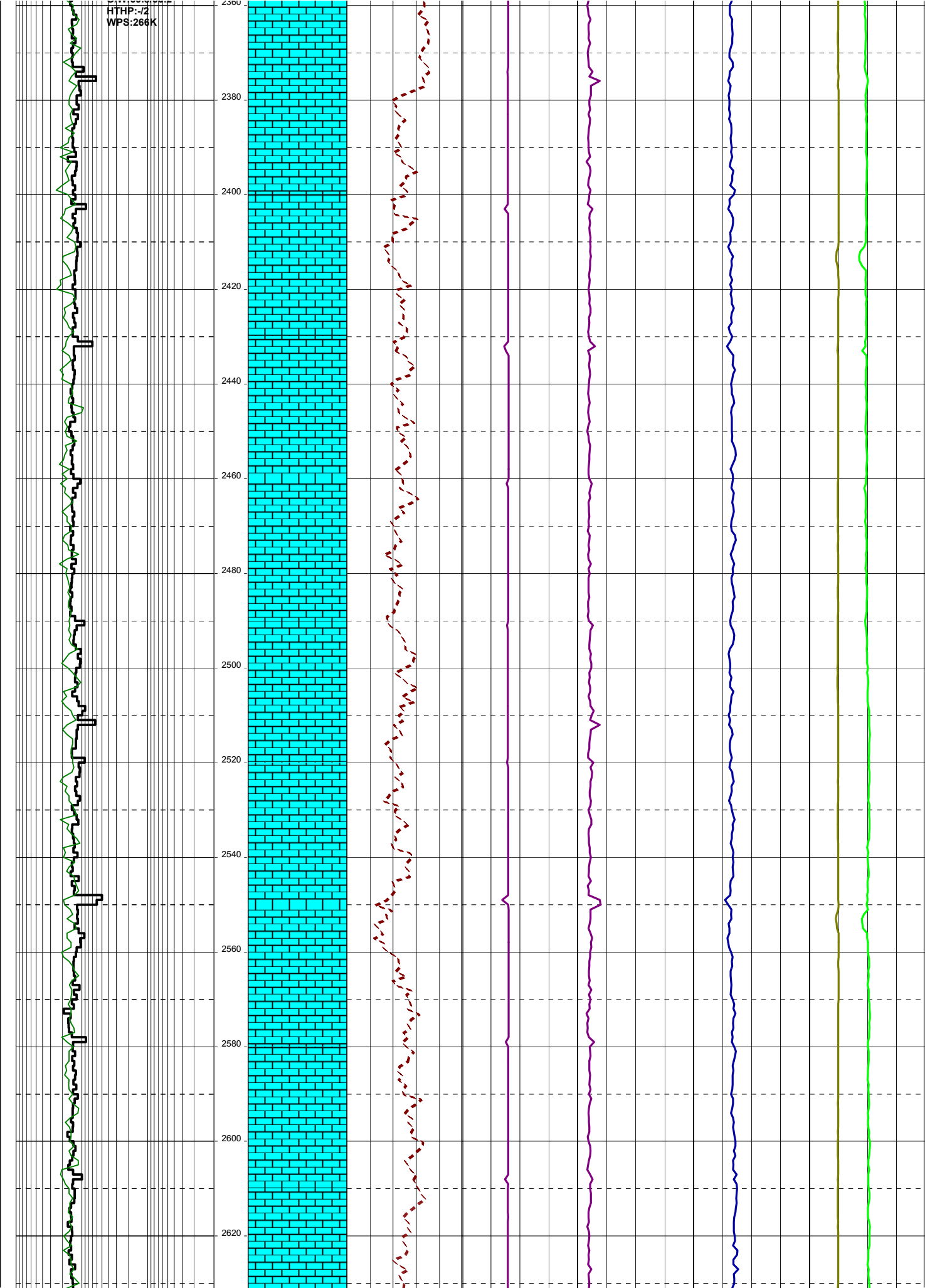




27-04-09
MW:10.70
FV:131
PV:53
YP:28
O/W:69.1/30.9
HTHP:-/2
WPS:249K

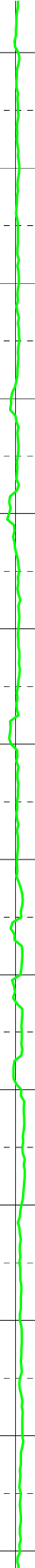
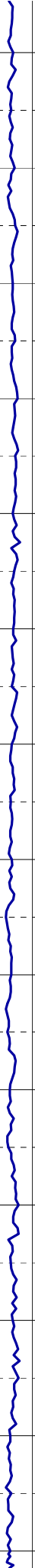
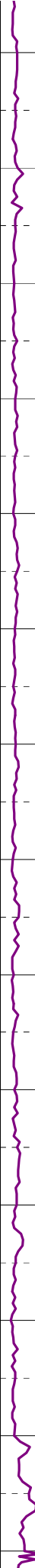
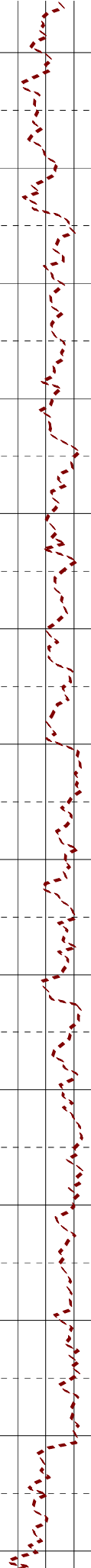
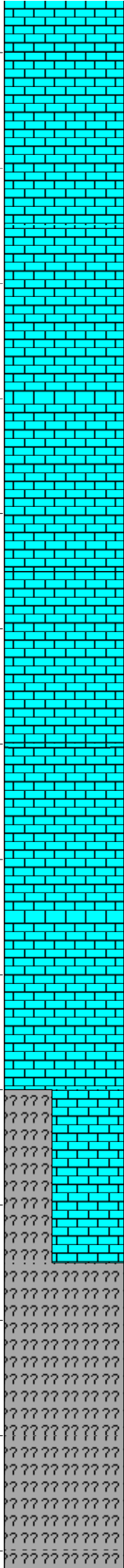
MW:10.70
FV:139
PV:52
YP:26
O/W:69.8/30.2

HTHP-72
WPS:266K



MW:10.85
FV:138
PV:52
YP:26
O/W:70.4/29.6
HTHP:-J2
WPS:275K

2640
2660
2680
2700
2720
2740
2760
2780
2800
2820
2840
2860
2880
2900



MW:10.90
FV:129
PV:50
YP:31
O/W:70.4/29.6

HTHP:-/2
WPS:255K

28-04-09

MW:10.90
FV:123
PV:67
YP:31
O/W:70.7/29.3
HTHP:-/2
WPS:255K

MW:10.95
FV:133
PV:61
YP:32
O/W:70.9/29.1
HTHP:-/2
WPS:273K

